

SHIMANO NEXUS HUB GEAR ADJUSTMENT & DISCONNECTING (FOR WHEEL REMOVAL)

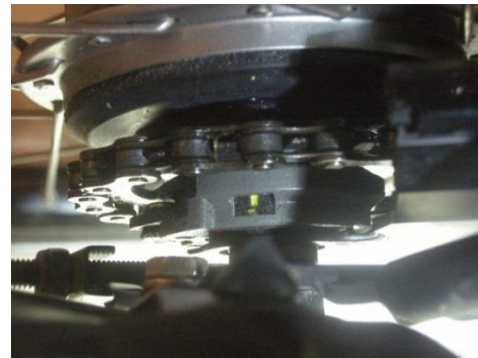
CABLES CAN, VERY OCCASSIONALLY, STRETCH TO SOME DEGREE AS THEY ARE USED. THIS CAN RESULT IN THE GEARS NOT CHANGING AS SMOOTHLY AS THEY SHOULD, OR NOT SELECTING THE CORRECT GEAR PROPERLY.

YOU NEED TO CHECK THE ADJUSTMENT OF THE GEAR PERIODICALLY.

ALL SHIMANO 7 & 8 SPEED HUB GEARS ARE 'INDEXED' ON THE 4TH GEAR.

- 1/ GO UP AND DOWN THE GEARS, SELECTING ALL THE GEARS, TWO OR THREE TIMES.
- 2/ SELECT GEAR 1 AND THEN CHANGE UP TO GEAR 4.

- 3/ LOOK FOR THE YELLOW MARKS ON THE RIGHT HAND SIDE OF THE HUB, JUST INSIDE THE FRAME.



- 4/ THESE MARKS SHOULD LINE UP. (YOU MAY HAVE TO CLEAN THIS AREA TO SEE THE 'WINDOW' CLEARLY!)

- 5/ IF THEY ARE OUT OF ALIGNMENT, TURN THE BARREL ADJUSTER ON THE SIDE OF THE GEAR SHIFTER A COUPLE OF NOTCHES ANTI-CLOCKWISE (AS YOU LOOK FROM THE CABLE ITSELF).

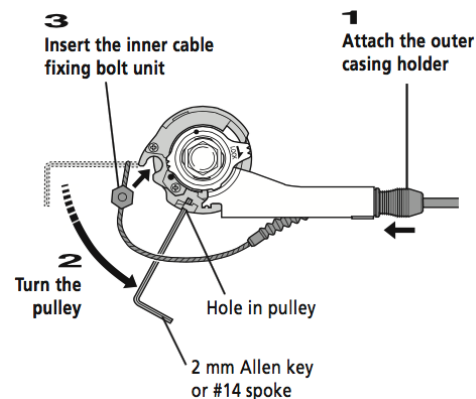


- 6/ REPEAT STEPS 1 TO 5 UNTIL THE MARKS ARE IN LINE. YOUR GEARS SHOULD NOW WORK CORRECTLY.

-
- A/ TO DISCONNECT THE CABLE TO ALLOW WHEEL REMOVAL, CHANGE INTO 1ST GEAR & INSERT A 2MM ALLEN KEY HORIZONTALLY INTO THE HOLE AT THE BACK OF THE SELECTOR PULLEY.

- B/ TURN DOWNWARDS &, HOLDING THE CABLE, REMOVE THE BOLT FROM ITS HOUSING. ALSO REMOVE OUTER CABLE FROM HOUSING.

TO REPLACE, FOLLOW THE PICTURE. ENSURE THE CABLE IS LOCATED CORRECTLY, THEN CHECK 1-4 ABOVE.



NEXUS HUB GEARS SHOULD BE SERVICED EVERY 12 – 24 MONTHS / 2000 MILES (DEPENDING ON USAGE) TO ENSURE OPTIMUM RELIABILITY AND PERFORMANCE.

IF YOU ARE UNCERTAIN ABOUT MAKING THIS ADJUSTMENT, PLEASE CALL US FOR HELP ON 01423 603 423 or 07946 70 22 66.